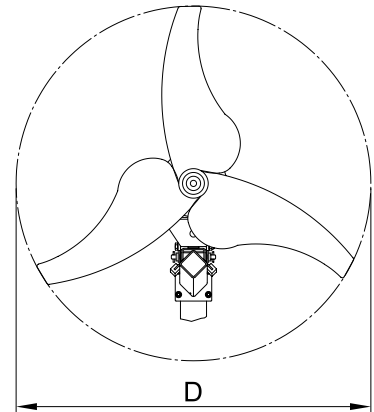
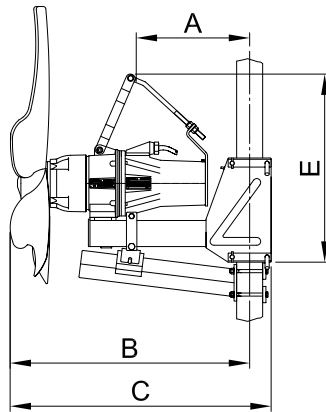
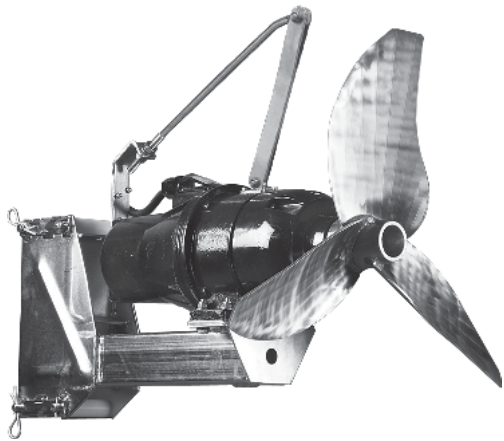


Flowmaker MRPG S100 - technical information



TYPE - MEDIUM SPEED	P2 kW	Amp.	n1 min ⁻¹	n2 min ⁻¹	A mm	B mm	C mm	D mm	E mm	H kg	Q m ³ /s
MRPG S100-0,75kW-3R	0,75	2,95	1000	148	460	893	975	620	750	137	0,55
MRPG S100-1,1kW-3R	1,1	4,30	1000	148	460	893	975	660	750	137	0,62
MRPG S100-1,5kW-3R	1,5	4,70	1000	148	460	893	975	700	750	139	0,70
MRPG S100-2,2kW-3R	2,2	6,40	1000	148	460	908	990	750	750	139	0,80
MRPG S100-3,0kW-3R	3,0	7,80	1000	148	410	923	1005	800	730	143	0,91

Voltage : 3x400V / 50Hz / 6-pole
 Cable : 8 m H07-RNF 7x1,5mm²
 Insulation class : F, 155°
 Motor safety : IEC 34-5 IP58
 Electrical safety : 3 bimetallic sensors and leak sensor
 Gear : Planetary gear
 Surface treatment : Paint as standard or 2-comp. epoxy as extra charge
 Start : DOL
 Motor casing : GG20
 Gear casing : GG25
 Propeller : 3-bl. in AISI 316 (3R)
 Motor shaft : St. 52-3
 Output shaft : AISI 329
 Sealing, motor side : Carbon/Ceramic
 Sealing, propeller side : SiC/SiC
 Fittings : Galvanized steel or AISI 316

P2 Motor power
 Amp. Ampere input
 n1 Motor rotations
 n2 Propeller rotations
 A Length from centre of gravity to centre of mast
 B Length to centre of mast
 C Overall length
 D Propeller diameter
 E Total height
 H Weight incl. trap clamp and motor bracket
 Q Capacity - in water

Can also be delivered as explosion proof (Ex d IIB T4)

The right to make alterations is reserved

BROCHUREMRPGII-S100-GB-R12

LJM



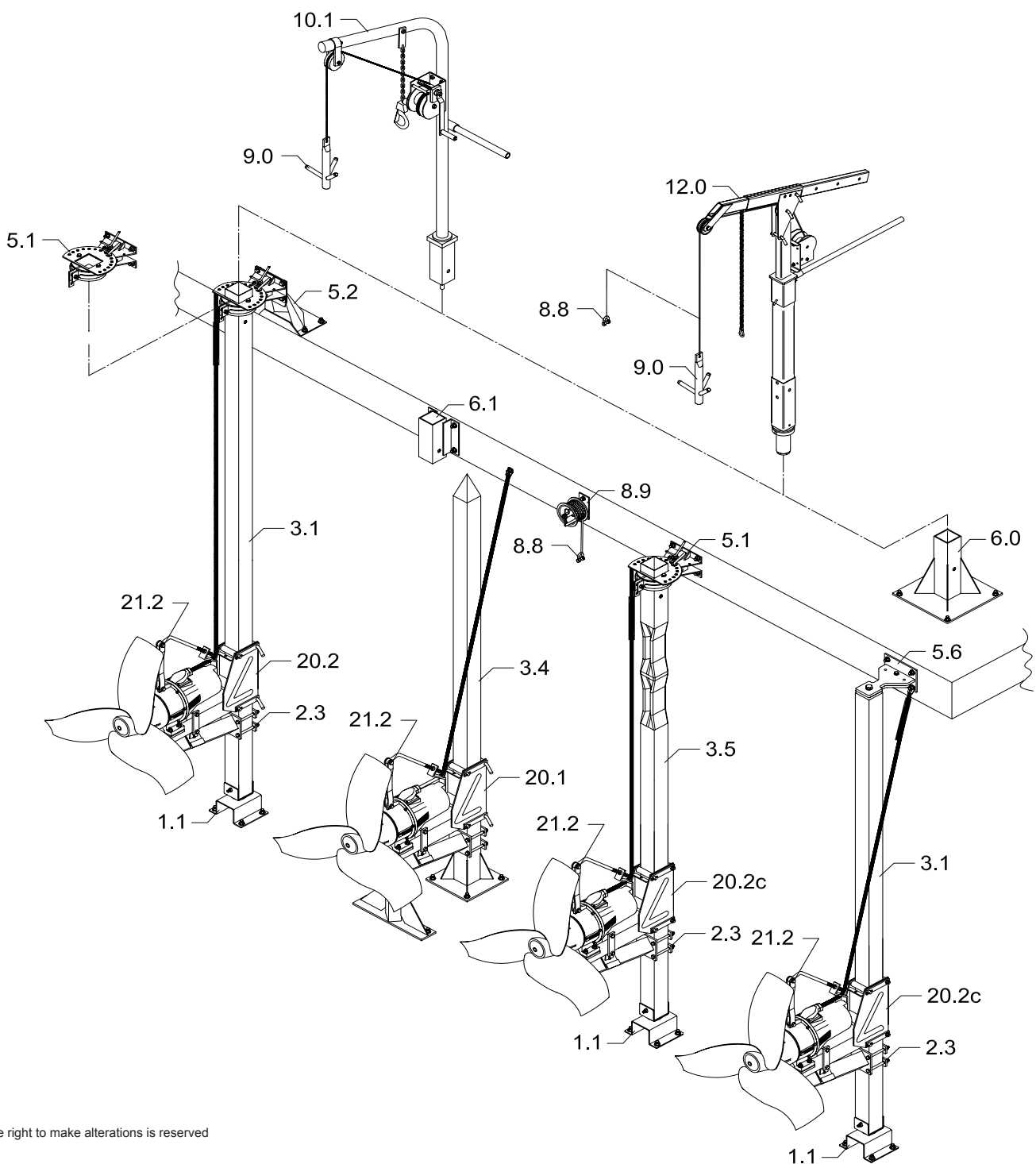
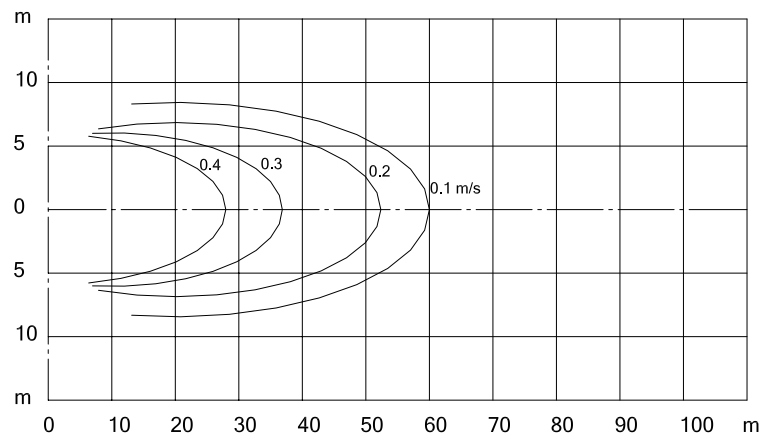
Lind Jensens Maskinfabrik A/S
 Kroghusvej 7, Højmark, DK-6940 Lem St.
 Tel.: +45 97 34 32 00 Fax: +45 96 74 42 98
 E-mail: industri@ljm.dk Home page: www.ljm.dk



Flowmaker MRPG S100 - technical information



The performance curve is only to be used as guidance



The right to make alterations is reserved