

Oxygen Transfer Technology

EFFICIENCY BY DESIGN

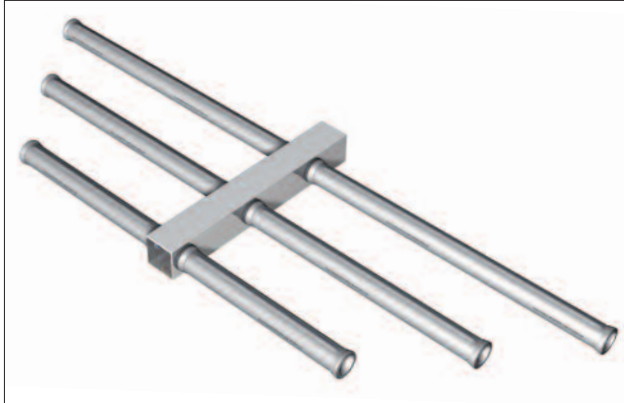


OTT GROUP

STANDARD



The proven design



The **OTT STANDARD** represents the “standard” in diffuser technology since 1985.

The state-of-the-art world’s first flooded tube/low buoyancy design also incorporated the air distribution channel to achieve the utilization of every pore along the entire length of the membrane uniformly and consistently over the entire range of air flows.

The STANDARD offers a solid construction and impressive performance data. The common connections and

optional adapters make it an extremely attractive product to retrofit less efficient, aged technologies quickly.

Every diffuser is air flow and pressure tested at the factory to ensure the highest degree of quality control and product uniformity. To the client, this guarantees an optimized, highly reliable and efficient aeration process for many years to come.



Stainless steel clamps

Membranes are retained on the diffuser body by stainless steel clamps which provide a uniform clamping pressure without wrinkling the membranes. Extra membrane material is provided to fold over the clamps for personnel and membrane protection.

Membranes

FLEXSIL® or FLEXNORM® Tubular membranes are optimally tailored to the type of wastewater and application. The highest quality standards and extensive QA/QC checks ensure continual high performance and reliability.

Fold-free membrane

The patented molded profile of the OTT core tube guarantees the membrane is fold-free whenever process air is switched off, especially in intermittent operations. This primary and unique detail is the basis for a high degree of mechanical integrity and durability of membranes.

Perforation

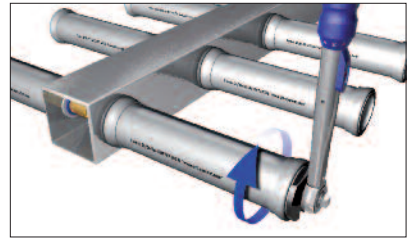
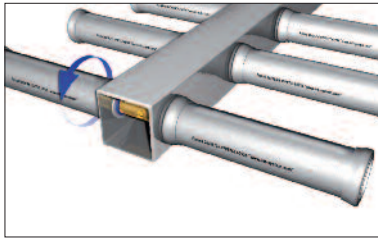
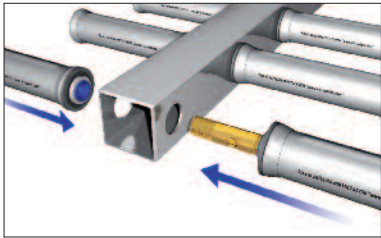
The OTT perforation technique delivers an optimum bubble pattern. This method is but one of many features that give OTT diffusers unrivalled efficiency. The efficiency of OTT diffusers has been proven by the results of numerous independent performance tests. The perforation of the membrane can be geared to plant-specific requirements – just talk to us.

Core construction

The STANDARD has a single-piece, injection-molded membrane support tube made of virgin, recyclable polypropylene (PP). The structure and design make the STANDARD core a unique product. Environmental sustainability of your plant is enhanced by using recyclable, environmentally inert materials.

The benefits at a glance

- + Flooded support tube made from environmentally-friendly polypropylene
- + Effective lengths: 500, 750 and 1000 mm
- + Compatibility with other systems
- + Simple and fast installation
- + High-quality membranes for any application



Technical data, installation video and installation instructions at www.ott-group.com



Connector

The STANDARD diffusers are screwed against one another using a solid dual-thread connector made from brass (alternatively of stainless steel). The connector serves as an air supply line at the same time and is provided with holes for this.

Diffuser connection

A 3/4" inner thread made from hard POM plastic supports the thread of the connector. The connecting thread is firmly enclosed by the STANDARD core. The STANDARD diffuser is produced in two variants: for holes in the air header with 45 mm or with 40 mm diameter. Connection adapters are available for other holes and for circular pipes.

Integral air channel

Injection molding of the diffuser makes it possible to incorporate the air channel on the underside of the membrane support tube. The even air distribution supplied yields a consistent bubble formation even at low air flux rates.

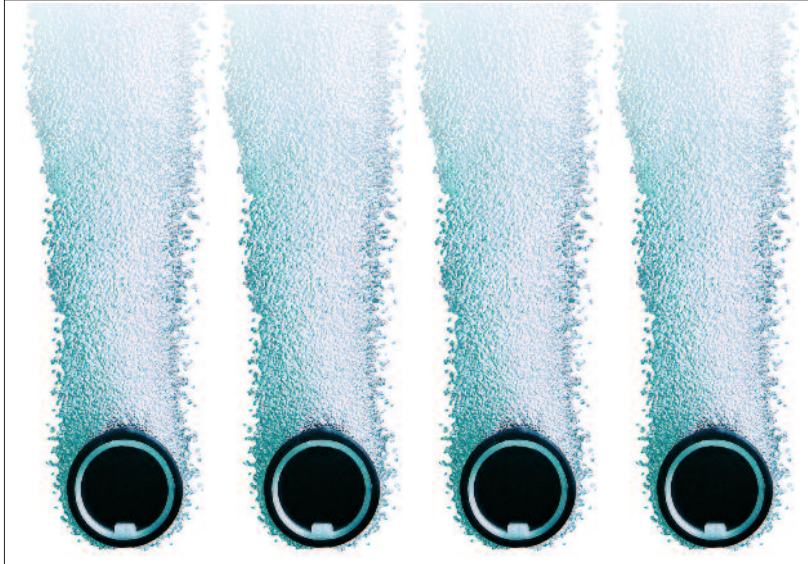
Flooded tube

The STANDARD diffuser cores are open and flooded at the ends. This means the diffuser's buoyancy is reduced.

Lengths

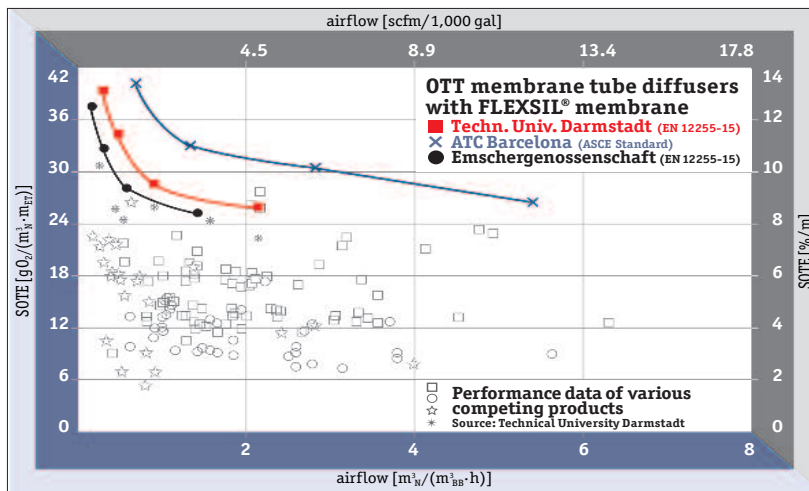
The STANDARD is available in the effective lengths of 500, 750 and 1000 mm.

Membrane tube diffusers from OTT – Efficiency and Quality



THE OTT MEMBRANE TUBE DIFFUSERS ENSURE UNIFORM FINE-BUBBLE AERATION.

OTT aeration systems – Performance data



TEST RESULTS OF OXYGEN TRANSFER TESTS BY INDEPENDENT INSTITUTES WITH FULL-FLOOR-COVERAGE OF THE BASINS. WE SHALL BE PLEASED TO SEND YOU THESE AND OTHER TEST REPORTS.



Member of
German Water Partnership

OTT GmbH

Frankenring 21 · Germany D-30855 Langenhagen
Phone: +49 (0) 511 78631 0
Fax: +49 (0) 511 78631 40

info@ott-group.com
www.ott-group.com

